



MONTHLY MEMBERSHIP PROGRESS REPORT

District 322C3

Results as of: 06/30/2019

GMT: SWADESH RANJAN SAHA

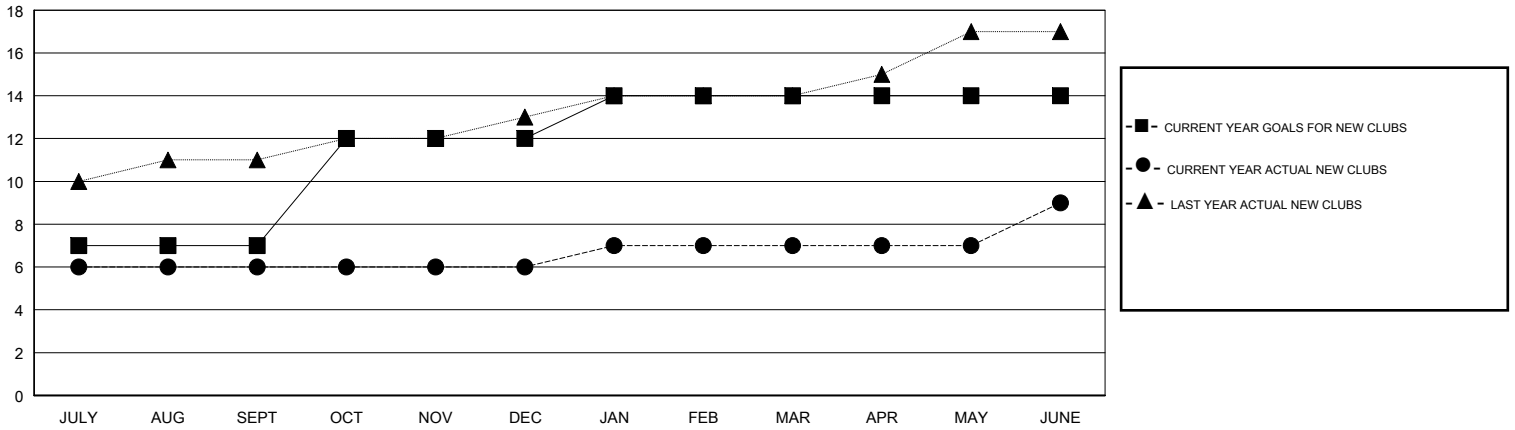
LOCATION INDIA

GMT CA

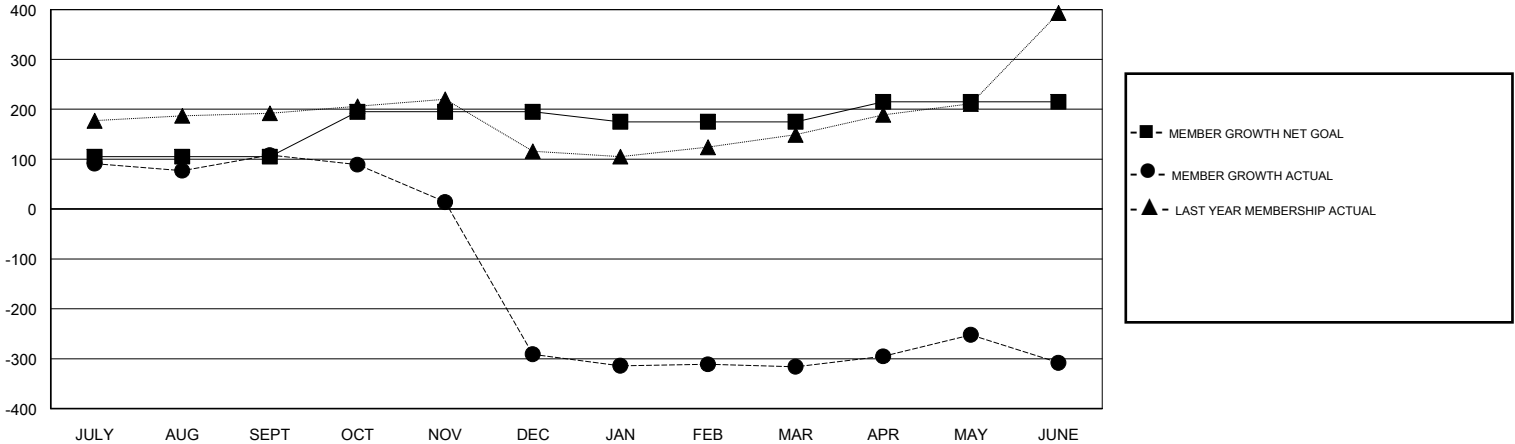
Clubs			
RESULTS FOR 2018-2019			
QUARTER	NEW CLUB GOAL	NEW CLUBS	DROPPED CLUBS
JULY/AUG/SEPT	7	6	2
OCT/NOV/DEC	5	0	9
JAN/FEB/MAR	2	1	1
APR/MAY/JUNE	0	2	2

Members			
RESULTS FOR 2018-2019			
QUARTER	MEMBER GROWTH NET GOAL	MEMBER GROWTH ACTUAL	DROPPED MEMBERS ACTUAL (including transfers)
JULY/AUG/SEPT	105	250	132
OCT/NOV/DEC	90	70	467
JAN/FEB/MAR	-20	88	93
APR/MAY/JUNE	40	283	255

GOALS AND ACTUAL NEW CLUBS CUMULATIVE



GOALS AND ACTUAL MEMBERS CUMULATIVE



DROPPED CLUBS: 14	73 CLUBS OF 117 ADDED 1 OR MORE NEW MEMBERS	<u>GENDER DISTRIBUTION</u>	
DROPPED MEMBERS		MALE	2,666 (74.10%)
DECEASED	15	FEMALE	932 (25.90%)
CLUB CANCELLED	332	Women Percentage Fiscal Year Goal: 26%	
OTHER	600	TOTAL FAMILY UNIT MEMBERS	2,316
TOTAL	947	FAMILY MEMBERS PAYING HALF DUES	1,444

[CLICK HERE FOR CUMULATIVE MEMBERSHIP DATA](#)